

A Mono[®] NOV Packaged Challenge For Flour Mill

As part of the restoration of Botley Mills and the improvement of facilities at the working mill museum, Mono NOV has designed, installed and commissioned a packaged system to macerate and pump wastewater and sewage to the main sewer.

The Grade II listed building in Hampshire was taken out of service in 1993 and records show that water-powered corn milling on the site, predates the Norman Conquest. The mill even received an entry in the Domesday Book of 1086.

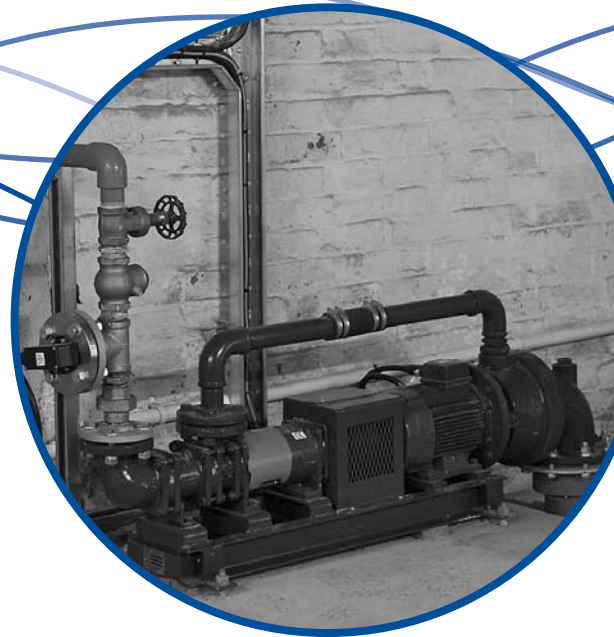
Mono's projects and installation team evaluated the requirements of the site and produced a design for a Mutrator packaged system which was subsequently accepted. The team was also responsible for offloading and positioning the equipment, as well as installing the rising main, delivery pipework and full mechanical and electrical installation to the control panel.

The Mono Mutrator consists of a macerator and Merlin progressing cavity pump that is situated above the sump and collects the wastewater and sewage from the 11 toilets, 2 urinals, 9 hand basins and 2 sinks. The suction of the pump lifts the wastewater into the macerating chamber to effectively shred any solids in the flow and prevent pipework blockages. The positive displacement Merlin pump offers the benefits of blockage-free operation and smooth transfer of the sewage at 4m³/h

through small bore pipes into the main sewerage system for further treatment by the local Water PLC.

Work in the historic building was sensitive and required close collaboration with staff at Botley Mills. Commenting on the project, the mill's Technical Director Patrick Appleby praised Mono's efficiency. "The project ran smoothly – one of the best I have been involved in. Mono's ability to supply and install offers good value for money. Their competence was clear from the moment we received the original quote. The bid was both realistic and competitive."

The Mutrator range has various design options to suit specific applications. Mutrators can be mounted vertically or horizontally to give the lowest possible design/construction costs and can be installed into an existing pump house or supplied as a complete sewage pumping station in a GRP kiosk, ready to be installed and operational within 2 hours of delivery.



Mutrator: **1 off M18 Macerator
1 off Merlin pump**

Product: **Raw Sewage**

Capacity: **4m³/h**

Pressure: **4 bar**

Pump Speed: **1450 rpm**

Drive: **4kW motor**



Mono Pumps Ltd
Martin Street, Audenshaw
Manchester, M34 5JA England
T. +44 (0)161 339 9000
E. info@mono-pumps.com
www.mono-pumps.com

Mono[®] NOV

One Company, Unlimited Solutions